

➤ **Strong as stone into the future.**

**RHENOCAST® Mineral Casting by SCHNEEBERGER**

**New name – well-known quality!**

RHENOCAST AG is now part of the Schneeberger AG line of high precision linear motion products for industry. The same reliable products you have come to expect from RHENOCAST® will continue to be available, with even more great products to come in the future.

**RHENOCAST® Mineral casting**

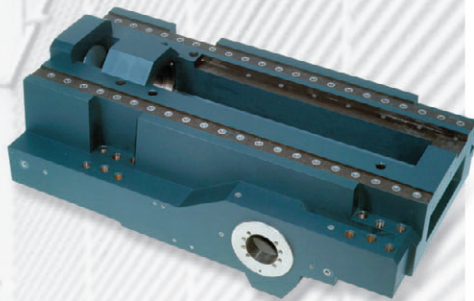
RHENOCAST® mineral casting is a binary system, consisting of mineral filling materials mixed with an epoxy resin that acts as a binding agent. Mineral casting is cast at room temperature in a cold casting process using dimensionally accurate negative moulds.

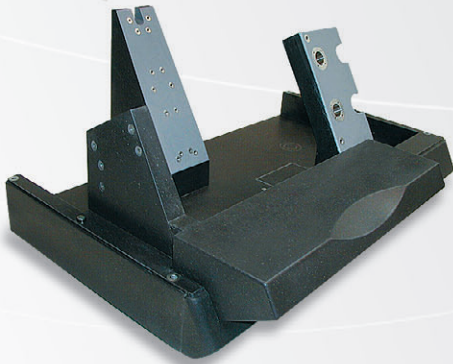
**Our services**

- Customer support during the concept and design phase
- Design, production and purchase of the moulds
- Design and supply of cast-in parts
- Concept and realization of machine systems

**Our Experience**

- Cast-in of complex infrastructure elements, including precision and connection parts
- Precision Moulding
- Adhesive connections
- Integration of high-precision linear guideways





### Components for creative solutions with mineral castings

- › Broad range of applications that require the material properties of:
  - Outstanding damping
  - High rigidity
  - Good thermal stability
  - Corrosion resistance
  - Dimensional accuracy
- › Optimal logistics: short processing time and highly flexible delivery times (Just-in-time)
- › Aesthetic design offers a broad spectrum of possibilities
- › Environmental compatibility in the production process and at the disposal



### Broad application range for Mineral Casting

Mineral casting can be used in practically all areas of machine and equipment construction. The product range includes components for the machine tool industry, measuring systems, electronic industry, plant construction and general machine construction in weight ranges of a few kilograms up to over 10 tons.



### Material characteristics RHENOCAST®

Density	2.30 – 2.45 kg/dm <sup>3</sup>
Modulus of elasticity	40 – 45 kN/mm <sup>2</sup>
Tensile strength	15 – 20 N/mm <sup>2</sup>
Compressive strength	100 – 120 N/mm <sup>2</sup>
Bending-tensile strength	28 – 30 N/mm <sup>2</sup>
Coefficient of linear expansion	11.5 – 14 · 10 <sup>-6</sup> K <sup>-1</sup>
Thermal conductivity	1.5 – 2 W/mK
Specific heat capacity	ca. 1.2 kJ/kgK
Log. decrement	0.03 – 0.10
Linear contraction after casting	ca. 0.3 ‰

#### SWITZERLAND

W. Schneeberger AG  
CH-4914 Roggwil  
Tel. +41 (0)62 918 41 11  
Fax +41 (0)62 918 41 00

info-ch@schneeberger.com  
[www.schneeberger.com](http://www.schneeberger.com)

#### GERMANY

Schneeberger GmbH  
D-75339 Höfen/Enz  
Tel. +49 (0)7081 782-0  
Fax +49 (0)7081 782-124

info-d@schneeberger.com

#### FRANCE

Schneeberger Technique  
Linéaire SARL  
F-91220 Brétigny sur Orge  
Tel. +33 (0)1 69 88 50 00  
Fax +33 (0)1 60 84 96 02

info-f@schneeberger.com

#### ITALY

Schneeberger S.p.A.  
I-21021 Angera VA  
Tel. +39 0331 93 20 10  
Fax +39 0331 93 16 55

info-i@schneeberger.com

#### USA

Schneeberger Inc.  
Bedford, MA 01730  
Tel. +1 781 271 0140  
+1 800 854 6333  
Fax +1 781 275 4749

info-usa@schneeberger.com