

SCHNEEBERGER
LINEAR TECHNOLOGY



180

SCHNEEBERGER
Systems

E

Intelligent solutions for your positioning problems

With SCHNEEBERGER at your side, you have a partner that can provide sophisticated solutions and extensive application skills for all your motion and positioning needs.

Our reputation is based on the following core competences:

- » **Engineering expertise:** Project planning and development of positioning systems to meet the highest demands
- » **Production skills:** Production of mechanical sub-assemblies and the installation of complex and ultra-precise machinery
- » **Application skills:** A wealth of knowledge acquired from many successful projects in different industries. Together with our customers, we evaluate the best possible products from our standard range or define solutions specific to each project.



Roggwil, Switzerland
Company headquarters and production location

The SCHNEEBERGER Group

For many years, the name of SCHNEEBERGER has been synonymous with modern linear guide technology used with a variety of industrial equipment and machinery.

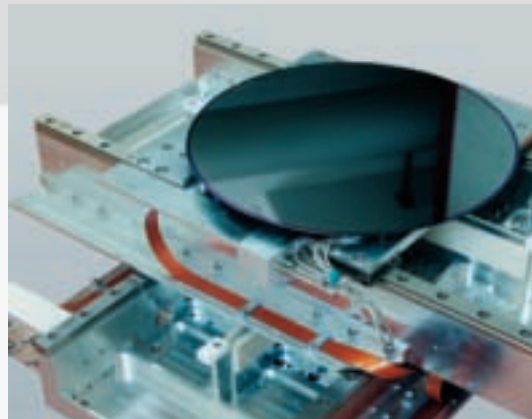
With over 50 years' experience in the design and manufacture of linear technology products, the SCHNEEBERGER Group has consistently introduced many innovative products and system solutions to the market.

Our global presence with strong sales and support organisations guarantees closeness to the customer in all major industrial economies. Comprehensive logistics capabilities and local support are your guarantee of a close partnership that starts at the project planning phase.

Our strengths

Challenging applications spur us on. Our engineers have a wealth of knowledge from a variety of branches of industry. Among other things, we develop demanding positioning systems for the following fields:

- » Wafer inspection: semiconductor industry (SEI)
- » Flat panel display inspection: LCD production
- » Bonding: electronics
- » Life science: pharmaceutical development, human and veterinary medicine, research
- » Advanced positioning: medical technology, rapid prototyping, image setting, pick and place, laser, etc.
- » Manufacturing systems: mechanical engineering

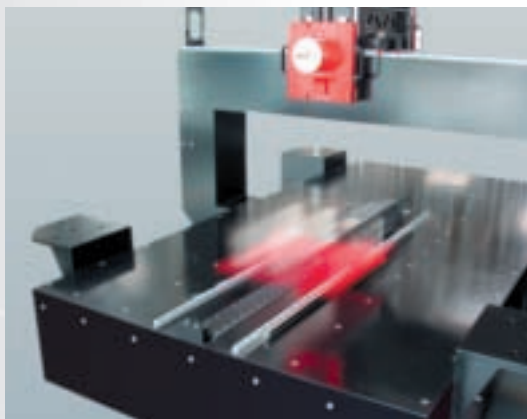


Positioning system for high-vacuum application

Highly integrated overall solutions

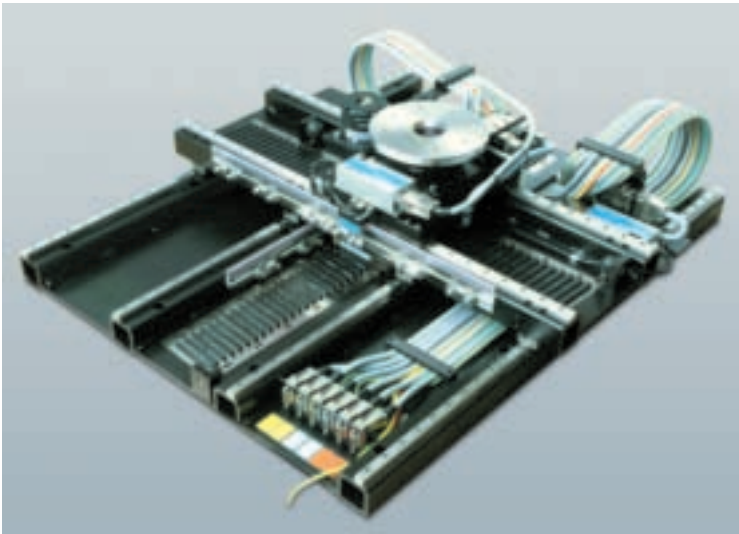
Using standard SCHNEEBERGER components and systems, we can put together customised overall solutions within the shortest possible time. Our customers benefit from tried and tested technical advantages at minimum development costs.

Our expertise encompasses the development and production of entire sub-assemblies, from the positioning system, via the controller unit through to the mineral casting machine structure. These one-stop, wide-ranging technological skills open up greater design flexibility and permit innovative system solutions.



Complete system for flat panel display inspection (FPD)

Our product platform



NanoX: nanometer stability anywhere

NanoX is a high-end positioning system for clean-room applications.

Thanks to its superior design with special sections and SCHNEEBERGER MINIRAILS, this cost-effective platform is extremely rigid.

Stability in the nanometer range - independent of position - guarantees maximum productivity.



NanoC: the nanometer under control

NanoC is a modular multi-axis controller system that takes your application into new dimensions in terms of faster control, noiseless motor control and reliability.

In combination with SCHNEEBERGER's high-precision stage NanoX, NanoC forms a perfect motion system that is easier to integrate into your application, that dovetails together perfectly and thereby offers maximum throughput.



POWERTRACK: smart design - maximum power

POWERTRACK is the standard linear system that unites strength, compact design, precision and speed.

POWERTRACK is the state-of-the-art solution for applications that make high demands on reliable and efficient positioning.

This product is exceptionally compact thanks to its unique, patented design that does not require a baseplate.



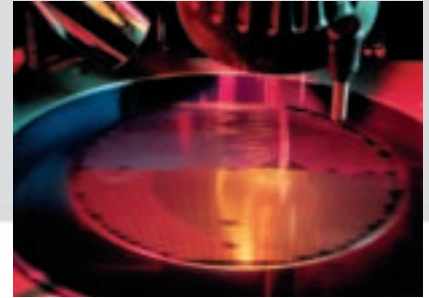
Areas of application for SCHNEEBERGER positioning systems

Wafer inspection

Wafer inspection is a highly developed control process in the manufacture of integrated circuits. The positioning systems used for this purpose must meet a large number of demanding criteria.

Demands on positioning systems in the field of wafer inspection:

- » High static stability in the nanometer range
- » Short offset time (vibrations, resonances)
- » Precise positioning repeatability
- » Vacuum capability (10^{-7} mbar)
- » Minimum magnet influences
- » High scan and step accuracy
- » Precise scan and step repeatability
- » Clean-room capability



Flat panel display inspection

TFT panels are highly susceptible to faults and error in production. Even before panels are integrated into a complex logistics process, they can be sorted in terms of quality thanks to our systems. The technical challenges of flat panel display inspection lie in the scanning of transparent material and multilayered structures.

Demands on positioning systems in the field of flat panel display inspection:

- » Short offset time (vibrations, resonances)
- » Precise positioning repeatability
- » High scan and step accuracy
- » Precise scan and step repeatability
- » Clean-room capability



Bonding

Bonding is the name given to the technology employed to connect the chips to the external contacts. Wire bonding, die bonding or flip-chip are different technologies for which our systems are used.

Demands on positioning systems in the field of bonding:

- » High speed for motion and settling
- » Precise positioning repeatability at different working cycles
- » High positioning accuracy at different working cycles
- » Optimum rigidity and ideal attenuation factors
- » Balanced friction values
- » Minimum warming (mass, friction)
- » Minimum thermal expansion (choice of material)
- » Minimum thermal tensions



Areas of application for SCHNEEBERGER positioning systems

Clean-room and vacuum applications

Inspection systems that work with electron microscopes are operated in a vacuum. This requires special processes when manufacturing positioning systems to guarantee the function of the entire system.

These include:

- » Design-engineering measures such as the venting of holes and large contact areas
- » Selection of materials in terms of preventing gas emissions
- » Special surface treatments
- » Special lubrication technology
- » Special cleaning and assembly processes clean rooms provided for this purpose

Advanced positioning in automation

Automation solutions often require special positioning systems, some of which are very demanding. Either because the spatial constraints of the automatic machine are very limited or environmental conditions make special demands on the system.

SCHNEEBERGER solutions of this type have the following features:

- » Simple, reliable and robust construction
- » Number of components reduced to a minimum
- » Tried and tested SCHNEEBERGER components with decades of experience in the field
- » Uniquely low overall heights with maximum displacement force

What you can expect from us



Advisory services. A competent partner from the very start.

Our goal is to work with a customer from an early phase in order to guarantee the maximum degree of system integration. This enables you to benefit from our experience and our technological advance in the development of complex positioning systems. Our on-the-spot agent is available for initial contact.

Development. Intelligent approaches to solve your problem.

Our engineering team develops systems that meet challenging specifications. Using powerful 3D CAD software, all parts of the installation are designed realistically and can be simulated. In this way, we can identify complex problems at the design stage and produce optimized solutions.

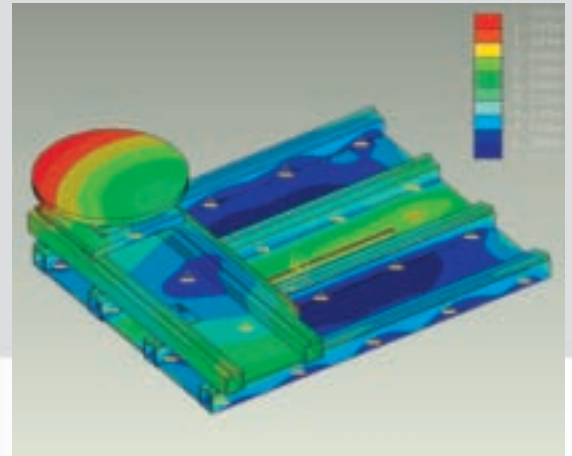


Analysis. Using advanced aids to optimize performance.

Static analysis: The static analysis of components and subassemblies is an important constituent if the maximum degree of efficiency is to be achieved in complete systems. The typical conflict condition «precision vs. speed» requires the development of light but rigid structures. FEM calculations and 3D simulation show us before the first prototypes whether the required properties can be achieved.

Modal analysis: The modal analysis gives us information about the dynamic behaviour of the components. Most important criteria: Vibrations and resonances, attenuation behaviour, rigidity, friction values.

Thermal analysis: By simulating the thermal conditions, we gain information on thermal expansion, thermal tensions, warming as well as deformation and bending.



Manufacturing and series production. Precision and process reliability.

The ultra-precise manufacture of structural components and the assembly of subassemblies is a core competence that goes back many years at SCHNEEBERGER. In this field, we have an unparalleled degree of technological expertise. Clean room or vacuum applications are assembled in our special assembly shops that meet clean room classification 1,000.

To enable us to meet the desired deadline, the process is reduced to the shortest possible, optimized throughput time. Modern working technologies such as just-in-time, Kanban as well the rolling forecast tools (SAP) developed by us enable us to react flexibly and quickly to customers' requirements.

Logistics. An essential part of our product.

Logistics, – particularly in the extremely cyclical semiconductor industry – requires the maximum degree of flexibility. For this reason, we maintain intensive logistical contacts with our customers. Via our active supply-chain, we are in a position to submit proposals that satisfy the manifold demands on reliability and flexibility. We understand our business in the demanding world of logistics – test us, we will be happy to prove it to you.

Support. Whenever you need us.

We offer our customers competent, expert support whenever they need it. Either on the spot using our international network or through modern means of communication – we take care of you. Our customers appreciate our open and honest style of communication. We are proud to be able to foster truly long-term partnerships anew every day. For our commitment, we also received the **Partnership Award** from KLA-Tencor.



CATALOGUES

MONORAIL and AMS
 LINEAR BEARINGS and Recirculating units
 SLIDES
 MINIRAIL
 AUTOMATION



BROCHURES

NanoX
 MINIMODULE
 SYSTEMS
 Mineral casting RHENOCAST®
 SPECIAL COMPONENTS



SCHNEEBERGER COMPANIES

SWITZERLAND

SCHNEEBERGER AG
 St. Urbanstrasse 12
 4914 Roggwil/BE
 Phone +41 62 918 41 11
 Fax +41 62 918 41 00

E-Mail:
 info-ch@schneeberger.com
www.schneeberger.com

GERMANY

SCHNEEBERGER GmbH
 Gräfenau, Postfach 70
 75339 Höfen/Enz
 Phone +49 7081 782 0
 Fax +49 7081 782 124

E-Mail:
 info-d@schneeberger.com

ITALY

SCHNEEBERGER S.p.A.
 Via S. Gottardo, 10
 21021 Angera VA
 Phone +39 0331 93 2010
 Fax +39 0331 93 1655

E-Mail:
 info-i@schneeberger.com

USA

SCHNEEBERGER Inc.
 11 DeAngelo Drive
 Bedford, MA 01730
 Phone +1 781 271 0140
 Fax +1 781 275 4749

E-Mail:
 info-usa@schneeberger.com

CZECH REPUBLIC

SCHNEEBERGER Mineralgusstechnik s.r.o.
 Průmyslový park 32/20
 350 02 Cheb – Dolní Dvory
 Phone +420 354 400 9417
 Fax +420 354 400 940

E-Mail:
 info-mineralguss@schneeberger.com

CHINA

SCHNEEBERGER (Shanghai) Co., Ltd.
 Denghui Lu 1128, Minhand District
 Shanghai 201108
 Phone +86 21 6209 0037 / 27
 Fax +86 21 6209 0102

E-Mail:
 info-cn@schneeberger.com

JAPAN

Nippon SCHNEEBERGER KK
 3-23-12 Shimoura, Setagaya-ku
 Tokyo 154-0002
 Phone +81 3 5779 7339
 Fax +81 3 3487 6010

E-Mail:
 info-j@schneeberger.com

SCHNEEBERGER SALES DEPARTMENTS

AUSTRIA

Phone +43 2 2387 2945
 Fax +43 2 2387 2983
 Mobile +43 67 6935 1035

E-Mail:
 info-a@schneeberger.com

BELGIUM, THE NETHERLANDS AND LUXEMBOURG

Phone +31 4 3365 4532
 Fax +31 4 3365 3579
 Mobile +31 6 5326 3929

E-Mail:
 info-nl@schneeberger.com

FRANCE

Phone +33 4 7239 5223
 Fax +33 4 7239 5224
 Mobile +33 6 0941 6269

E-Mail:
 info-f@schneeberger.com

GREAT BRITAIN

Phone +44 16 2582 7708
 Fax +44 16 2582 7780
 Mobile +44 77 8814 5645

E-Mail:
 info-uk@schneeberger.com

ISRAEL

Phone +972 3 546 1082
 Fax +972 3 546 1564
 Mobile +972 5 0551 7920

E-Mail:
 info-il@schneeberger.com

KOREA

Phone +82 2442 0971
 Fax +82 2442 2971
 Mobile +82 1 6202 0971

E-Mail:
 info-k@schneeberger.com

POLAND, SLOVAKIA AND CZECH REPUBLIC

Phone +420 5 4725 0333
 Fax +420 5 4725 0444
 Mobile +420 6 0278 4077

E-Mail:
 info-cz@schneeberger.com

SPAIN AND PORTUGAL

Phone +34 6 4991 9740
 Fax +34 9 4687 0973
 Mobile +34 6 4991 9740

E-Mail:
 info-es@schneeberger.com