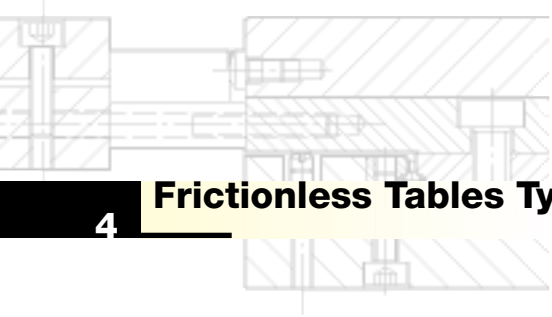


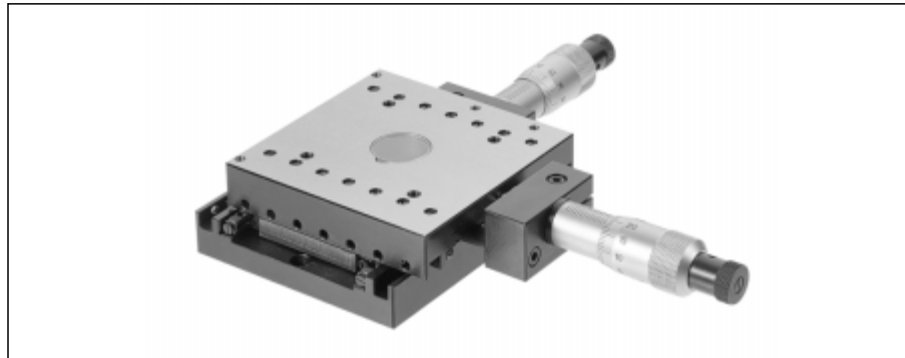
Table of Contents

1 Product Overview	P●3
2 Application	
2.1 3-axis Measuring Arrangement with MAT	P●6
2.2 Grinding Wheel Dressing Unit with UCT	P●8
3 Technical Information	
3.1 Accuracy	P●10
3.2 Materials	P●10
3.3 Permissible Operating Temperatures	P●10
3.4 Lubrication	P●10
3.5 Permissible Velocities and Accelerations	P●11
3.6 Friction, Running Accuracy and Smoothness	P●11
4 Frictionless Tables Type NB	
4.1 Frictionless Tables Type NB	P●12
4.2 Material	P●12
4.3 Standard Model	P●12
4.4 Special Model	P●12
4.5 Dimensions	P●13
4.6 Acceptance Tolerances	P●15
5 Frictionless Tables Type NF	
5.1 Frictionless Tables Type NF	P●17
5.2 Material	P●17
5.3 Standard Model	P●17
5.4 Special Model	P●17
5.5 Dimensions	P●18
5.6 Acceptance Tolerances	P●20
6 Frictionless Tables Type NCB	
6.1 Frictionless Tables Type NCB	P●22
6.2 Material	P●22
6.3 Standard Model	P●22
6.4 Options	P●23
6.5 Special Model	P●23
6.6 Dimensions	P●24
6.7 Options	P●26
6.8 Acceptance Tolerances	P●28
6.9 Ordering information	P●29
7 Frictionless Tables Type NCF	
7.1 Frictionless Tables Type NCF	P●30
7.2 Material	P●30
7.3 Standard Model	P●30
7.4 Options	P●31
7.5 Special Model	P●31
7.6 Dimensions	P●32
7.7 Options	P●34
7.8 Ordering information	P●37
7.9 Acceptance Tolerances	P●38
8 Frictionless Tables Type MAT	
8.1 Frictionless Tables Type MAT	P●41
8.2 Material	P●41
8.3 Standard Model	P●41
8.4 Options	P●41
8.5 Special Model	P●41
8.6 Specifications MAT 15	P●42
8.7 Specifications MAT 25	P●44
8.8 Options	P●46
8.9 Load rating and speed	P●46
8.10 Acceptance Tolerances	P●47
8.11 MAT calculation program	P●47
8.12 Supplementary sheet for MAT 15 and 25	P●48
9 Frictionless Tables Type UCT	
9.1 Frictionless Tables Type UCT	P●49
9.2 Material	P●49
9.3 Standard Model	P●49
9.4 Options	P●49
9.5 Special Model	P●49
9.6 Specifications UCT 15	P●50
9.7 Specifications UCT 25	P●52
9.8 Options	P●54
9.9 Load rating and speed	P●54
9.10 Acceptance Tolerances	P●55
9.11 UCT calculation program	P●55
9.12 Supplementary sheet for UCT 15 and 25	P●56
10 Design and Fitting Guidelines	
10.1 Horizontal and Vertical Fitting	P●57
10.2 Attaching Frictionless Tables	P●57
10.3 Preloading Frictionless Tables	P●57
10.4 Design of Base Unit	P●57
11 Dimensioning Frictionless Tables	
11.1 Load Carrying Capacity and Operational Life	P●58
11.2 Moment Loading	P●59



4 Frictionless Tables Type NB

4.1 Frictionless Tables Type NB



- 2 Axis model; in steel or aluminum according to the size
- 3 Sizes of \square 55 to 125 mm
- Strokes from 15 to 25 mm
- With roller cages AC
- With or without micrometer stop
- Hole for through light

4.2 Material

Size NB 1-55/55 = aluminum with steel attaching plate
 Size NB 1-75/75, NB 2-125/125 = steel

4.3 Standard Model

These coordinate frictionless tables have a square surface, and use type R linear bearings in the upper and lower sections. Traversing is on two through hardened double-V linear bearings. Type AC roller cages are used. Can be used horizontally or vertically. Standardized attaching holes in the upper and lower sections.

Frictionless Tables Type NB 1-55/55

All of the coordinate movements can be locked in position with a clamp which is standard fitting. The steel attaching plate has a 20 mm hole to let through light, whereby in the end positions there is a useful diameter of 7.5 mm only.

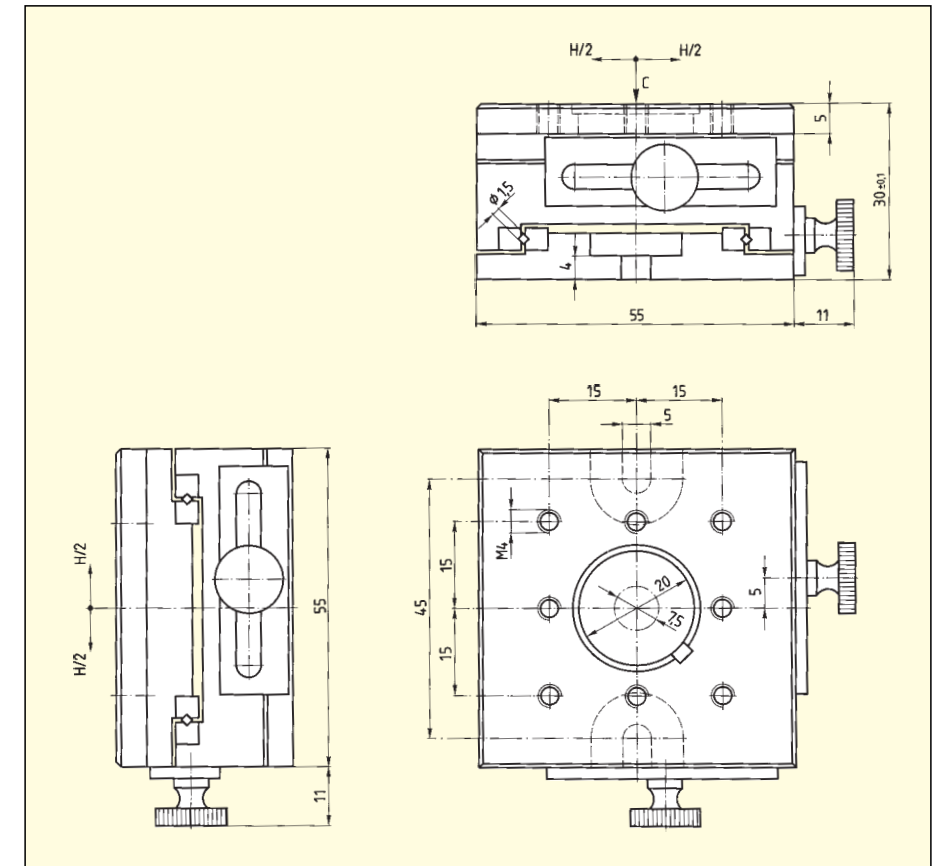
Frictionless Tables Type NB 1-75/75 / NB 2-125/125

The hole D_1 , to let through light, can be used to the full extent. Stroke adjustment is by means of a micrometer, whereby the frictionless table is drawn lightly onto the limiting stop with a spring. Micrometer reading accuracy = 0.01 mm.

4.4 Special Model

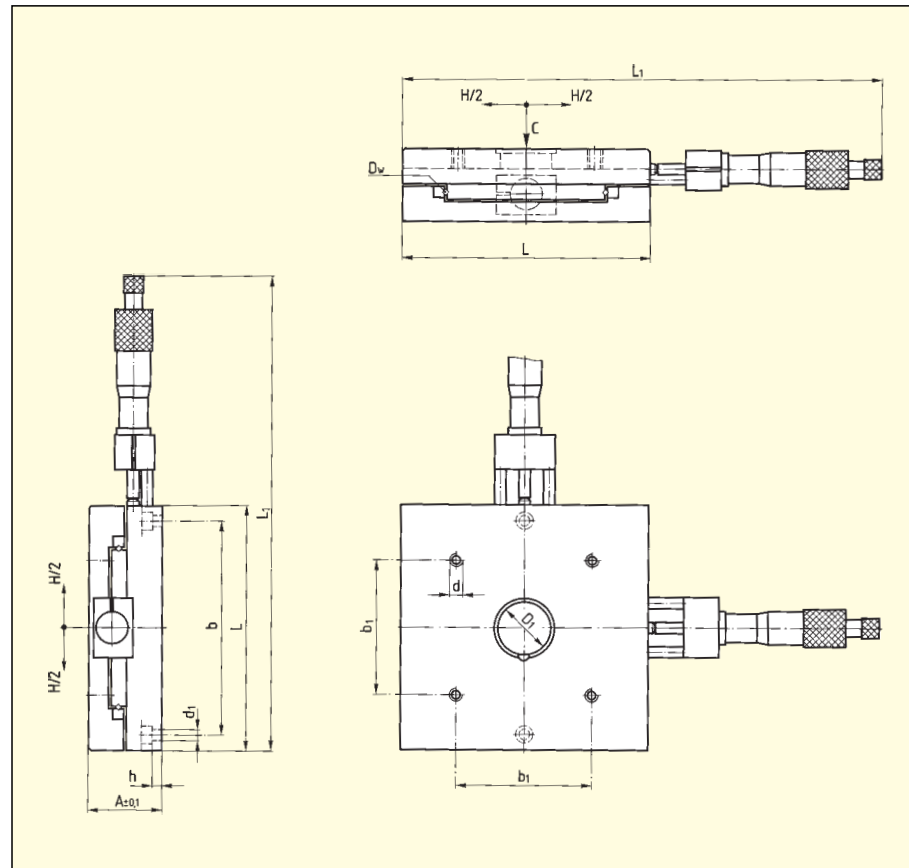
On request the upper section can be supplied without hole D_1 (-OD).

4.5 Dimensions



Type	H	C in N	$M_{L,Q}$ in Nm	Weight in kg
NB 1-55/55	25	550	3.3	0.3

Ordering example: 1 frictionless table NB 1-55/55-OD



Type	A	D _w	D ₁	H	L	L ₁	b	b ₁	d	d ₁	h	C in N	M _{L,Q} in Nm	Weight in kg
NB 1-75/75	30	1.5	16	15	75	157	67	40	M4	3.5	4.5	950	5.7	1.5
NB 2-125/125	36	2	26	25	125	237	110	70	M6	5.5	4.5	2125	17	4

4.6 Acceptance Tolerances

All SCHNEEBERGER frictionless tables are manufactured as standard with the accuracies indicated in the tables. Measurement is in the unloaded state on a flat surface. The tolerance values are shown in the table as mentioned before. We can supply, as an extra cost option, tables with **acceptance certificates** with regard to angular devia-

tion in the individual axes (ROLL, PITCH, YAW). All SCHNEEBERGER tables are also available in higher accuracy, special quality executions or in customer specific acceptance tolerances.

		Straightness of Travel in μm over Stroke Lengths; Laterally	Flatness of Travel in μm over Stroke Lengths; at Top
Type	Size		
NB	1-55/55	5	5
	1-75/75	4	4
NB	2-125/125	6	6

		Squareness in μm of both Motions; over Stroke Length	Parallelism in μm of Table Surfaces, frictionless table in Middle Position
Type	Size		
NB	1-55/55	10	20
	1-75/75	5	10
NB	2-125/125	8	15