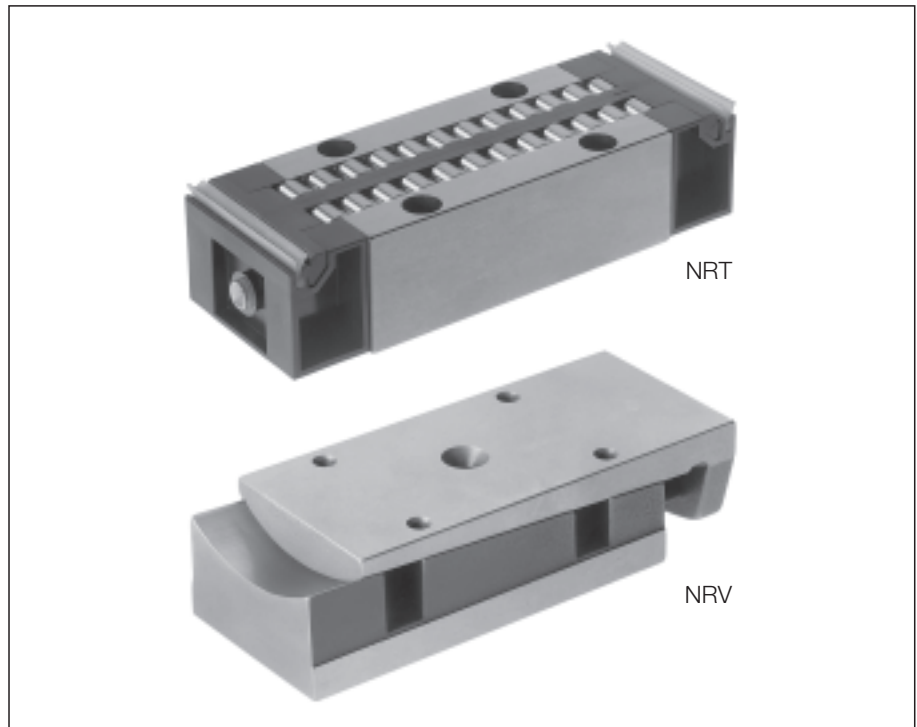


**14.1 Recirculating Unit Type NRT  
 and Preload Wedge Type NRV**


The roller recirculating units NRT are designed for medium to heavy loads, high rigidity and high precision. Together with suitable SCHNEEBERGER linear bearings, adjusting wedge or attaching part ingenious constructions can be realized.

These wedges are used normally to adjust the preload. At the same time, by suitably shaping the cylindrically ground wedge bars, small angular deviations and deformations in the surrounding construction can be compensated. The parts are made from hardened steel.

**14.2 Material**

NRT

Steel body: through hardened, very precisely ground steel

Recirculation: plastic

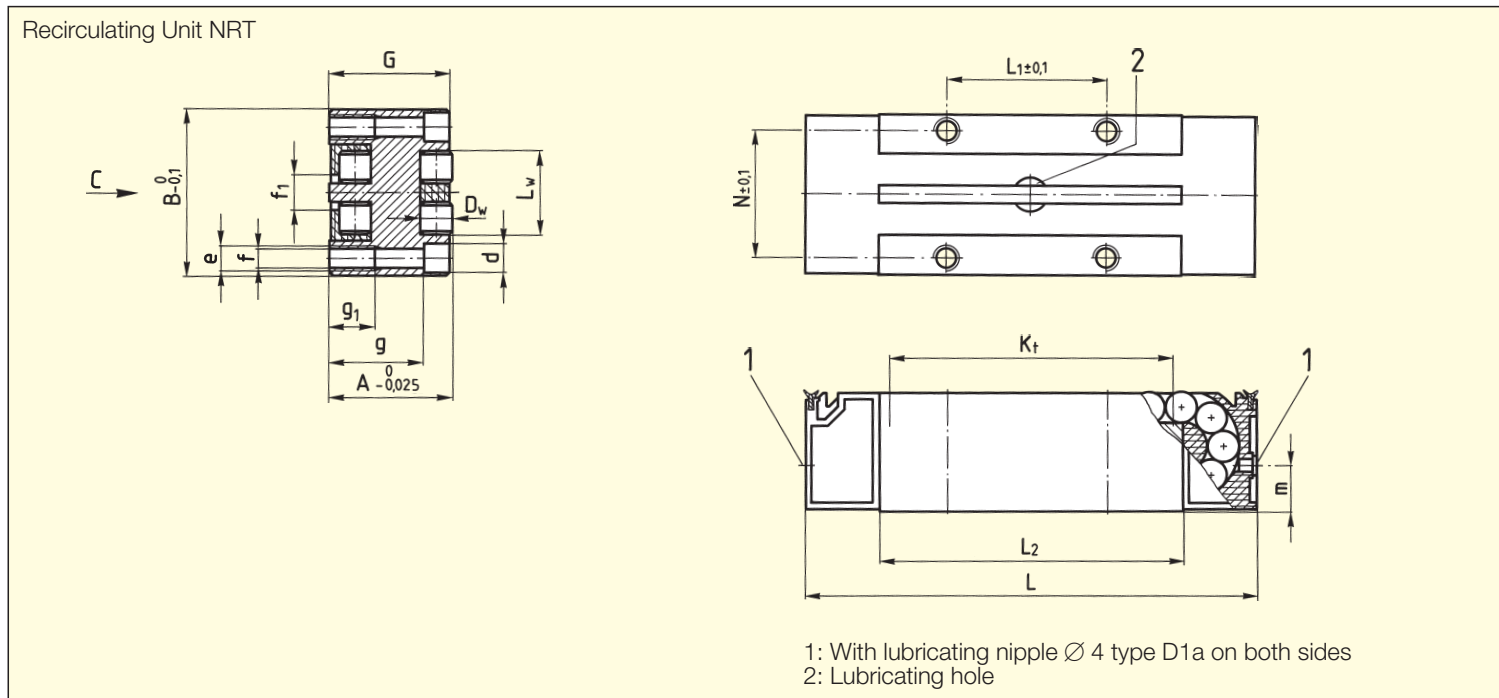
NRV

hardened steel

**14.3 Standard version**

The design of the twin race recirculating unit type NRT, is based on a through hardened, highly accurately ground steel carrier and two plastic components to recirculate the rollers. On each front face there is a double lipped wiper and a lubricating nipple. There is also an additional lubricating hole in the roller return passage.

## 14.4 Dimension Table Type NRT and NRV



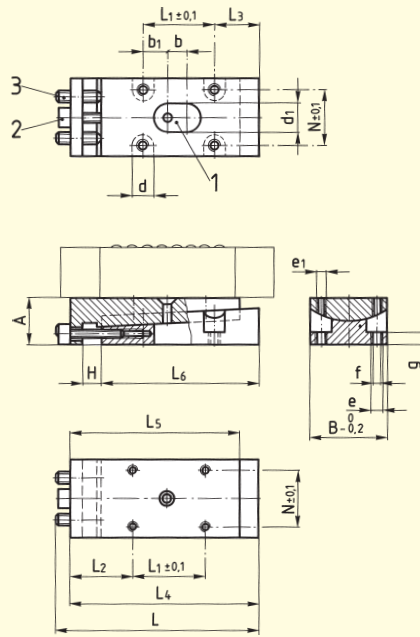
Type	Size	Weight in g	A	B	D <sub>w</sub>	G	K <sub>t</sub>
<b>NRT</b>	<b>19077</b>	185	19	27	5	18.85	45
<b>NRT</b>	<b>26111</b>	570	26	40	7	25.85	70
<b>NRT</b>	<b>38144</b>	1390	38	52	10	37.8	90

Ordering example: 20 Recirculating Units NRT 19077, matched in sets of 4

Type	Size	Weight in g	A min.	B	H max.	L max.	L <sub>1</sub>	L <sub>2</sub>
<b>NRV</b>	<b>19077</b>	195	16	27	7	72	25.5	22.5
<b>NRV</b>	<b>26111</b>	670	25	40	8	105	44	29
<b>NRV</b>	<b>38144</b>	1300	30	52	8	130	51	37.5

Ordering example: 20 Preload wedges NRV 19077

Preload wedge NRV



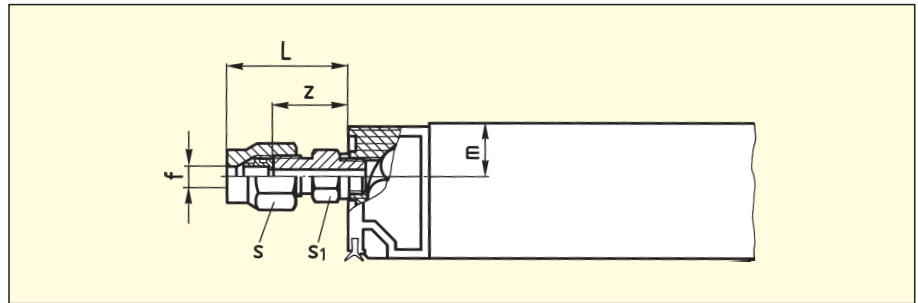
- 1: Lubricating hole
- 2: Preload Adjust screw
- 3: Counter-pressure screws

L	L <sub>1</sub>	L <sub>2</sub>	L <sub>w</sub>	N	d	e	f	f <sub>1</sub>	g	g <sub>1</sub>	m	C in N
77	25.5	49.2	13	20.6	6	M4	3.3	6	15.5	6	5.3	43000
111	44	75.6	19	30	8	M6	5	9	20	10	10.3	98000
144	51	96.8	26	41	11	M8	6.8	11	29	14	14.5	181000

L <sub>3</sub>	L <sub>4</sub> max.	L <sub>5</sub>	L <sub>6</sub>	N	b	b <sub>1</sub>	d	d <sub>1</sub>	e	e <sub>1</sub>	f	g
16.5	68	61	56	20.6	7	9	7	9	M4	M3	3.3	4.5
21	98	90	83	30	9	17.5	8	11	M6	M4	5	8
28.5	121	113	105	41	10	20.5	11	14	M8	M6	6.8	8

## 14.5 Special version

### Recirculating Units with One-sided Connection for Central Lube System



Type	Size	L	f	m	s	s <sub>1</sub>	z
NRT	19077-ZS-2	13	2	5.3	8	7	10.5
NRT	19077-ZS-3	14.5	3	5.3	8	7	11
NRT	26111-ZS-2	13	2	10.3	8	7	10.5
NRT	26111-ZS-3	14.5	3	10.3	8	7	11
NRT	26111-ZS-4	18.5	4	10.3	10	8	14
NRT	26111-ZS-5	19	5	10.3	10	8	14
NRT	26111-ZS-6	20	6	10.3	12	10	14
NRT	38144-ZS-2	13	2	14.5	8	7	10.5
NRT	38144-ZS-3	14.5	3	14.5	8	7	11
NRT	38144-ZS-4	18.5	4	14.5	10	8	14
NRT	38144-ZS-5	19	5	14.5	10	8	14
NRT	38144-ZS-6	20	6	14.5	12	10	14

Ordering example: 4 Recirculating Units NRT 26111-ZS-2

## 14.6 Preload Adjustment

### Preload Wedge Type NRV

These wedges are used normally to adjust the preload. At the same time, by suitably shaping the cylindrically ground wedge bars, small angular deviations and deformations in the surrounding construction can be compensated. The parts are made from hardened steel.

Adjustment Figures

Type	Size	$\Delta A^*$	Per Thread Revolution
NRV	19077	0.35	0.035
NRV	26111	0.4	0.0625
NRV	38144	0.4	0.075

\*Max. difference in height of the preload wedge