

12.1 Recirculating Unit Type SKC



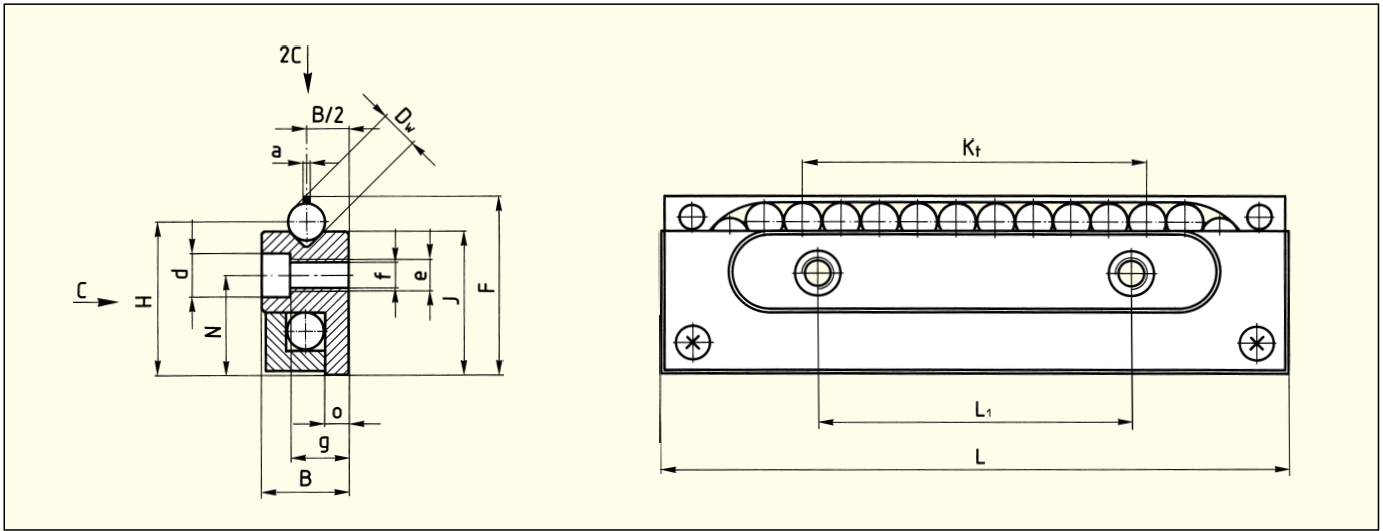
The recirculating unit type SKC provides unlimited stroke and equal load carrying capacity in all directions. The SKC, designed for low-to-medium loading conditions, operates dry – lubrication is not required!

These units, used with SCHNEEBERGER linear bearings type R or RD, are drop-in-replacements for SCHNEEBERGER SK and SR recirculating units.

The combination of coated stainless steel, ceramic and Teflon® makes this recirculating unit suitable for **lubrication free operation in high vacuum and clean room applications.**

12.2 Material

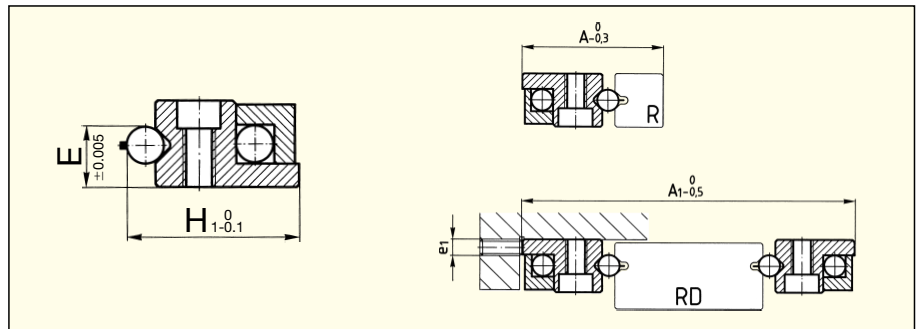
The precision ground body is made from stainless steel and coated with «Duralloy Ultra-Slide DSV», a thin dense chrome. The load carrying balls are made from ceramic. The ceramic balls are spaced by smaller diameter Teflon® balls.



Type	Size	B	Dw	F	H	J	Kt	L	L ₁	N	a	d	e	f	g	o	*C in N
SKC	3-075	8	3	16.9	14.5	13.8	48	75	25	9	0.5	6	M4	3.3	4.9	2.4	150
SKC	6-100	15	6	28.9	24.5	22.9	60	100	50	15	1	9.5	M6	5.2	9.8	4.4	250

* Load carrying capacity without lubrication

Fitting dimensions/tolerances



Type	Size	A	A ₁	e ₁
SKC	3-075	23.5	57	M3
SKC	6-150	40	94	M5

Matched sets (GP):
Dimension E and H₁ within 3 μm

General data

Maximum speed: 120 m/min
Maximum acceleration: 50 m/s ²
Temperature range: -150 to 200° C